

Softub[®]

essentials

Products That
Enhance Your
Softub[™] Spa
Experience



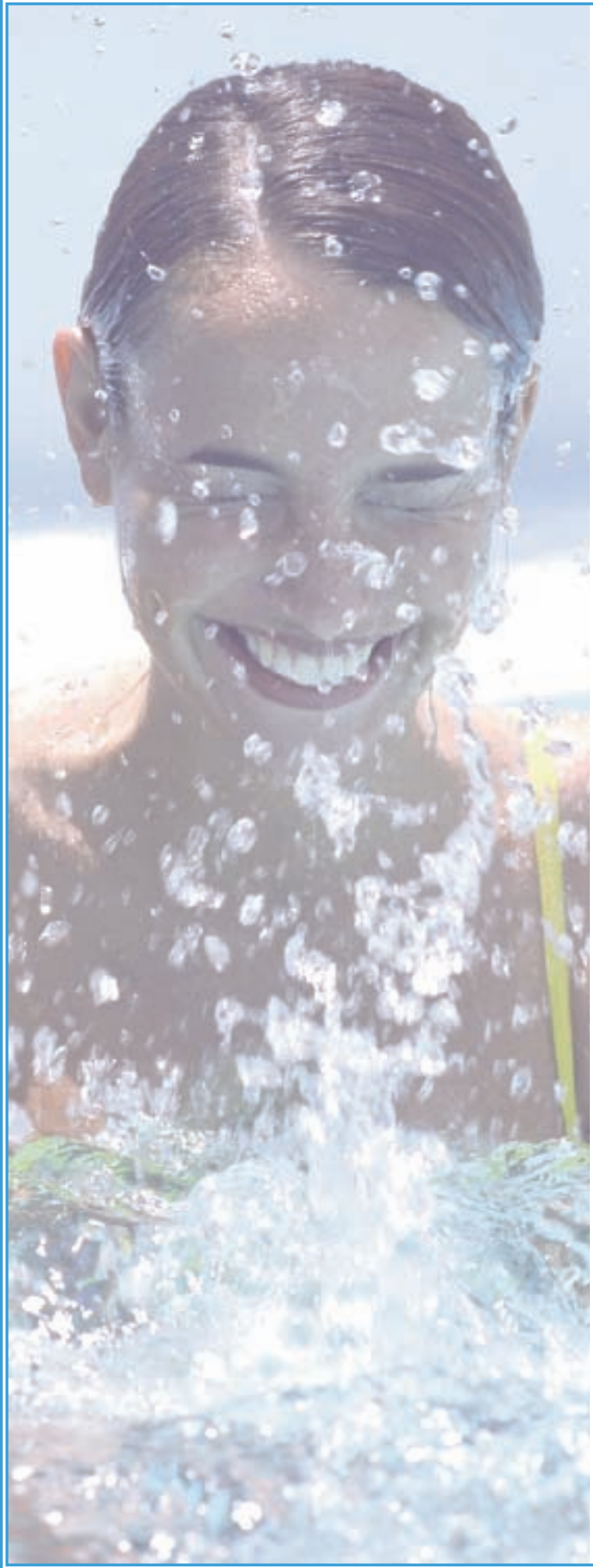


Table
of
Contents

Fragrances.....1

Softub™ Companions.....2

Jet Options.....3

Entry Rail.....3

Water Treatment.....4-5

Water Testing.....5

Hydrotherapy Products.....6

Novelties.....7

Filtration Products.....8

Filter Cartridges.....8

Cover Removal Options.....9

Spa Steps.....10

Spa Decking.....10-11

Spa Vacuums.....12

Filling & Draining Products.....12

Vinyl Care.....13

Outdoor Novelties.....14

fragrances



A



C



B

**A. Spazazz Original
Bath and Spa Crystals (17 oz)**

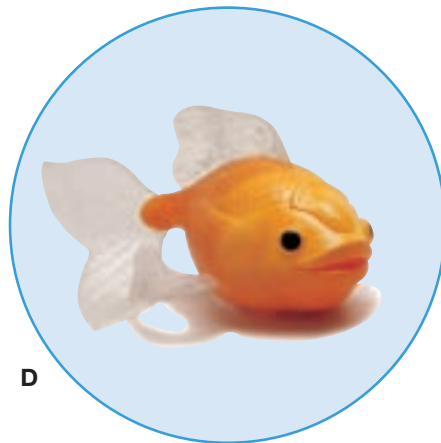
- Honey Mango #7366
- Eucalyptus Mint #7367
- French Vanilla #7368
- Tropical Rain #7370
- Pina Colada #7375

B. Spazazz Gift Pack #7392
12 assorted fragrances in a vinyl pouch.

**C. Spazazz Escape
Bath and Spa Crystals (22 oz)**

- Verbena Lime Coconut #7377
- Grapefruit Orange #7380
- Lavender Palmarosa #7376

D. Fragrance Dispenser Fish #7390
Fill this floating fish with your favorite liquid fragrance and squeeze anytime to add a pleasing scent to your spa experience.



D



E

**E. inSPAration Spa and
Bath Fragrances (9 oz)**

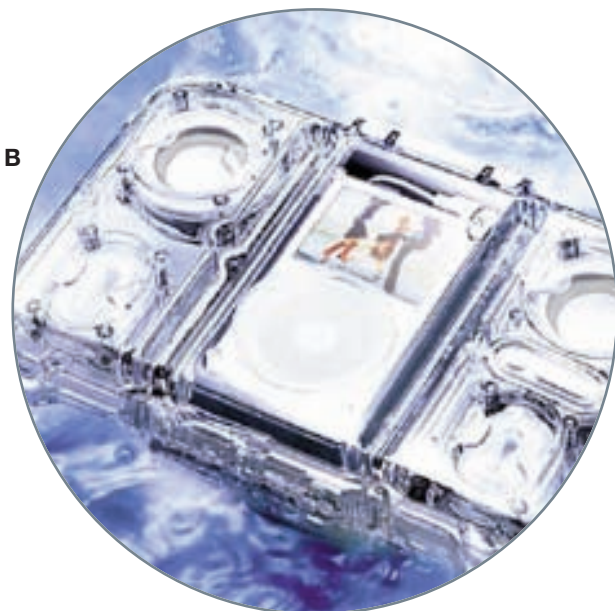
- Eucalyptus Mint #7327
- Honeysuckle #7328
- April Showers #7329
- Rain #7330
- Vanilla Twist #7331
- Spa Berry #7333
- Coconut Mango #7335
- Romance #7336
- Tranquility #7337
- Joy #7338
- Hawaiian Sunset #7340

F. inSPAration Gift Pack #7325
12 assorted fragrances in a vinyl pouch.



F

softub™ companions



A. Leathertex Pillows #9801

You'll appreciate the comfort of our exclusively designed Softub Pillows. Made to match your Softub Spa's exterior color, or mix and match for a unique look.

B. Soundcase Floating Speaker System #7505

Turn your iPod into a floating waterproof stereo system to enjoy your favorite music in the spa, pool, beach or anywhere!

C. Booster Seat

Blue #9805350; Black #5350BK
A versatile, water filled seat. Acts as a booster or raises hips for aquatic exercise.

Leathertex™ Pillow Color Options:



Sapphire Blue
#9801SB



Forest Green
#9801F



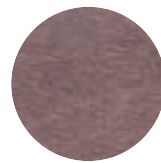
Almond
#9801A



Camel
#9801C



Port
#9801P



Mocha
#9801M



Softub Blue

Give yourself a boost!



jet-stream

The Softub hydrotherapy system was designed with one thing in mind - a customized hydrotherapy experience that you create! Personalize your Softub with your choice of two optional jets.



D

D. X-Stream Spinning Jet #9813520

This jet features a spinning "center eye" that create a rotating blast of water. The X-Stream is fully directional so that you control how broad - or tight the pattern of water is by easily adjusting the location of the eyeball.



E

E. Pulse-Stream Spinning Jet #9813535

Two streams of water can be more fun than one! The Pulse-Stream jet spins to create a circular pattern of two dancing blasts of water.

THE JET-STREAM SYSTEM IS FOR SOFTUB MODELS MANUFACTURED AFTER JANUARY 1, 2006. SEE YOUR DEALER FOR OPTIONS ON MODELS MANUFACTURED PRIOR TO THAT DATE.

NEW!

easy entry



Spa Entry Rail and Stand #8230

- Lift & Turn Locking Base Swivels 360° for Easy Entry and Exit
- Hardware Free! Under Spa Base Utilizes the Weight of the Spa Water to Secure in Place
- High Impact Material Will Not Fade and is Impervious to Chemical Contact
- 5 Year Warranty

Rail Tray #8228

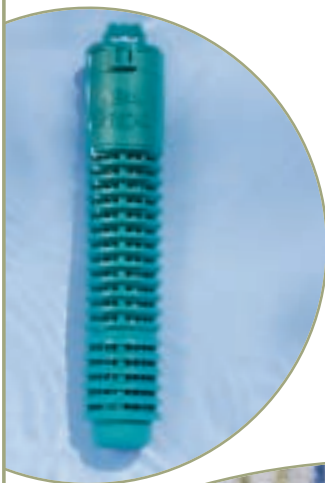
Attaches to the Spa Entry Rail to keep things convenient at spa side!



softcare

The water care system specially formulated for Softub™ vinyl lined spas.

A



B



C



A. SPA FROG®
Water Mineral Purifier
#9806275
Enhances the effectiveness of Softcare's sanitizing system reducing the amount of chemical sanitizer needed. Lasts for 4 months.

B. KIT OPTIONS:
Softcare Water Treatment Kit #9812524
Included are the necessary Softcare products needed to properly care for the spa. Includes: Softcare Chlor, Softcare pH Down, Softcare pH Up, Softcare Metal Gon, Chlorine Test Strips, and Water Treatment Guide.

Softcare Spa Frog Kit
#9812525
This deluxe kit includes everything in the basic kit plus a Spa Frog™ Mineral Purifier.

C. WATER TREATMENT PRODUCTS:
Softcare Gon
#9802510 16 oz.
Metal and stain eliminator.

Softcare pH Hold
#9802508 2 lb.
Long-term pH stabilizer.

Softcare Chlor
#9802502 2 lb.
#9802501 5 lb.
A granular concentrated chlorinating sanitizer, specifically formulated for use in the Softub Spa.

Softcare Water Clear
#9802509 16 oz.
Water clarifier and brightener.

Softcare pH Up
#9802503 1.25 lb.
Raises the pH of water.

Softcare pH Down
#9802504 1.5 lb.
Lowers the pH of water.

Softcare Defoam
#9802507 16 oz.
Instant foam eliminator.

Softcare Filter Renu
#9802506 16 oz.
Use this filter cleaner monthly for clear water and longer filter life.



Measuring Cup #2000

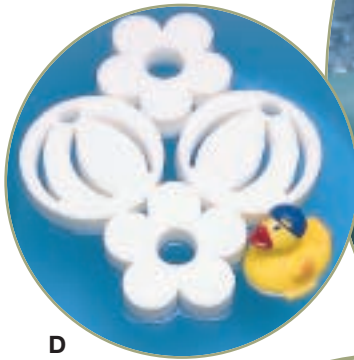
clear water

- D. Beach Ball Scum Sponge #6855**
Wonder Flower Scum Sponge #6860
 These fanciful floaters absorb 40 times their weight in oils and lotions to prevent scum rings at the water line.

- E. SPARoma**
 Spa fragrance with the added benefit of enzymes keeps spa water sparkling and maintenance to a minimum. Time release capsules simply drop in the tub. Can be used until contents are gone. 3/pk

- #7272 Cherry Blossom
- #7280 Eucalyptus
- #7282 Gardenia
- #7292 Pear Delight
- #7288 Spring Mist
- #7294 Tropical Paradise
- #7274 Citrus Blast
- #7276 Florida Mango
- #7290 Forest Glen
- #7284 Lavendar
- #7286 Pina Colada
- #7278 Vanilla Creme

- F. Spa Perfect™ for Vinyl Spas #1801**
 Body oils, cosmetics and other contaminants accumulate in the spa to cloud water, and produce scum at the water line. Spa Perfect gently breaks down oils that otherwise create cleaning challenges. Use once-a-week. 1 liter.



D



F



E

water testing

- G. Insta-Test Test Strips #1820**
 Measures for Free Chlorine and Bromine, Alkalinity, pH, and Total Hardness. (50 ct)

- H. TruTest Digital Test Strip Reader #1860**
 Provides an accurate digital test in seconds. Tests for:
- Free Chlorine/Bromine
 - pH
 - Total Alkalinity

- I. TruTest Test Strips #1865**
 These strips work in conjunction with the TruTest Digital Test Strip Reader. (50 ct)



G



H



I

hydrotherapy



A



A. PharmaSpa Aromatherapy Spa and Bath Crystals 450g

These products aren't just spa fragrances they are therapeutic fragrances. Rejuvenate your muscles and joints with PharmaSpa Crystals in the following unique blends:

- #7600 Articul-R
- #7606 Tiger Balm
- #7602 Energy
- #7604 Eucalyptus

B. WaterWorks Hydrotherapy Program #4055

An all-inclusive spa workout system. Includes Resistance Gloves, Wet Bells, Ankle Weights, and a laminated exercise card that will last spa-side for years.

Also available individually:

C. Resistance Gloves #4001

Increases arm resistance when swimming or performing water exercises.

D. Wet Bells #4025

Lightweight dumbbells provide resistance in the water.

E. Ankle Weights #4003

Increase the results of your water workout by wearing these 1-1/2 lb. weights.

(Shown in WaterWorks group photo)

Laminated Exercise Card #4005

Detailed spa exercises on a handy laminated card that will last spa-side for years.



C



B



D



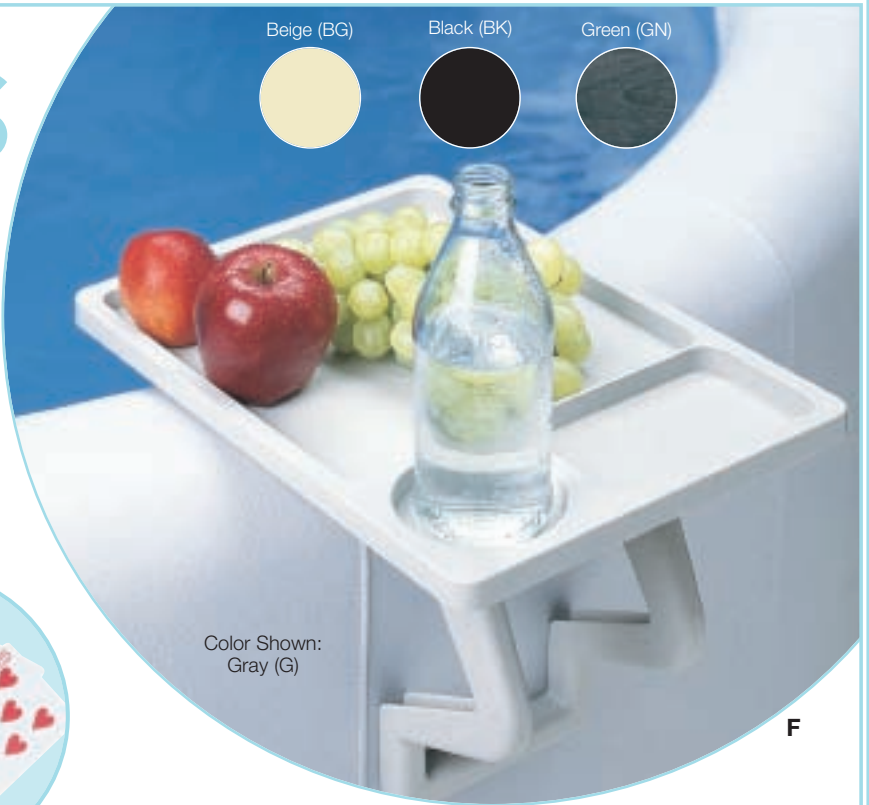
E

novelties

Beige (BG)

Black (BK)

Green (GN)



Color Shown:
Gray (G)

F

F. AquaTray® Spa Side Table #6950
Slides over the side of the spa for an instant table. Adjustable leg keeps it securely in place. Gray (G), Beige (BG), Black (BK), or Green (GN)

G. Waterproof Playing Cards #7500
Made of 100% plastic, these cards stay dry and "playable" forever.



G

H. Kool Tray #6900
This soft, cushy tray can also be used as a drink holder or checkerboard. Checkers included! Choose Blue (B), White (W) or Aquamarine (A).



H

I. Floating Spa Thermometers
Duck #6610
Classic #6625
Frog #6609

J. Aroma Ducks
These cool ducks are infused with a scent to add fun to any setting. Non toxic, lead free, and phthalate free.
Blueberry #5450
Bubblegum #5452
Grape #5454
Apple #5456
Orange #5458
Raspberry #5460



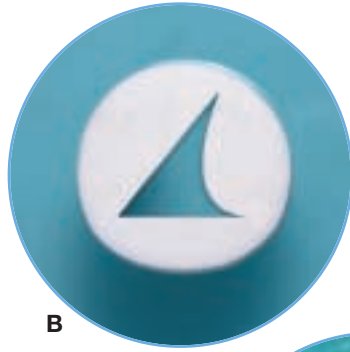
J



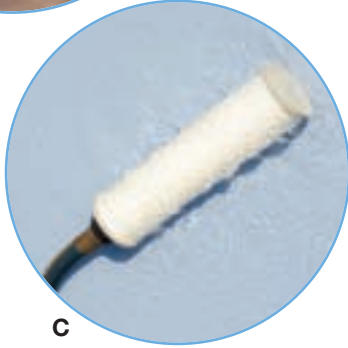
I



A



B



C



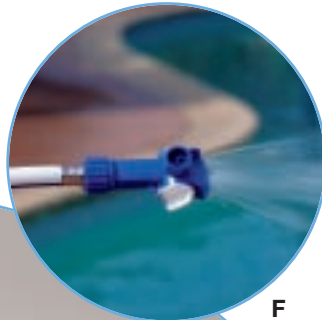
D

- A. Great Cleaning Canister #5047**
This handy canister can soak 1 - 2 filters at a time. Allows storage area for spa products when not in use.
- B. Great Filter Protector #5036**
This scum sponge absorbs 40 times its weight in body oils and lotions to help protect your filter from clogging and to keep your water line clean. Plus, it's the perfect reminder to clean your spa filter. When it's dirty, so is your filter.
- C. Great Start Filter #5044**
Don't fill your spa with water containing metals and other deposits then add chemicals to make them go away. Prep your water before it enters your spa and use less chemicals at start-up.
- D. Great Grit Filter #5039**
Grit and other debris can damage spa surfaces when filling from garden hoses and water heaters. Eliminate grit with this filter that attaches to any garden hose.

filter cartridges



E



F

Upgrade to **Microban®!**



H

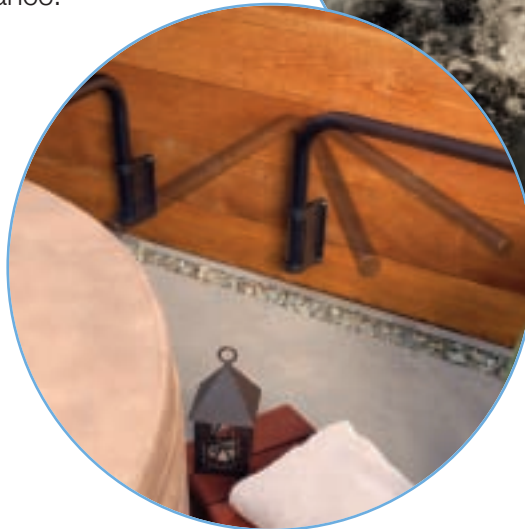
- E. Softcare Filter Renu #9802506**
Clean your filter monthly to reduce scale and build-up and increase filter life. 16 oz.
- F. Great Easy Clean #5050**
Simply attach your garden hose to the Great Easy Clean and turn the valve. Watch as the water projects with high velocity in a flat fan pattern, working its way into the center of the filter for deep cleaning action. Cuts cleaning time dramatically.
- G. Great Barrier Snap-on Extra #8555**
Upgrade your filter! High temperatures and the wet environment make the filter surface a target for bacteria. Great Barrier filters are made with **Reemay® Liberty™ with Microban®**. Microban antimicrobial protection inhibits the growth of bacteria that can cause stains, odors and degradation of the filter surface. The continuous cleaning action of Microban makes the filter easier to clean, and fresher between cleanings.
- H. Replacement Filters and DuraSocks**
- | | |
|----------------|-------|
| Screw-On | #5000 |
| Snap-On | #5015 |
| Snap-On 2009 | #5020 |
| Blue DuraSock | #5153 |
| Black DuraSock | #5154 |

cover slide

Cover Shelf (wall mount) #8246

A simple alternative to get the Softub lid out of the way for easy spa enjoyment. The Cover Shelf attaches to any wall, fence or structure behind the Softub spa. The two support arms fold flat and out of the way when not in use, yet easily pivot to an open position to support the Softub lid. Requires 36" of clearance.

Coming soon!
Don't have a place to attach the Cover Shelf?
Ask about our new underspa base that provides a spa-side shelf in any spa location.
#8224



lid lift

Softub Lid Lift #8220CA

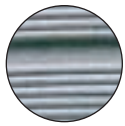
The only cover lift system in the world designed for the Softub spa! The Lid Lift is the perfect accompaniment to the Softub hinged cover. Enjoy your Softub experience without struggling to remove the cover due to two shocks that allow you to lift the cover up and out of the way with just one hand!

The Lid Lift stays securely under the spa due to the weight of the water. The lifting device utilizes two gas shocks to allow easy one-handed operation.

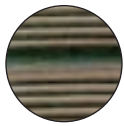


In the open position, the cover can act as a privacy screen to make your spa setting more secluded.

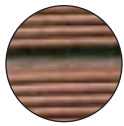




Dark Gray #9475
SOFTUB BLUE



Espresso #9467
SOFTUB MOCHA



Mahogany #9465
SOFTUB PORT



Beechwood #9470
SOFTUB CAMEL



Tan #9476
SOFTUB ALMOND

A. Curved Handi-Step

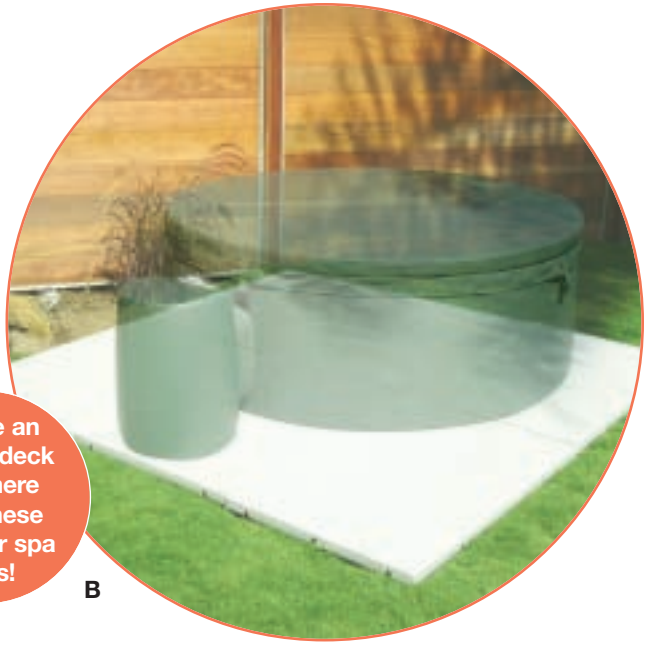
This all weather step fits snugly against your Softub Spa making entry and exit easier. Snap together assembly requires no tools. Choose from five colors to match or compliment the Softub spa.

B. Instant Spa Deck #8259

Create an 8' x 8' deck in minutes with these convenient spa pads. Easy snap-together design requires no tools. Set of six pads 32" x 48" each. Gray.



A



B

Create an instant deck anywhere with these modular spa pads!

spa settings



A

surround

Encircle your spa in decking - or just add a step, either way the Softub Modular Surround System is both a beautiful and functional setting for your Softub spa. Manufactured with high quality redwood components and finished in an attractive, protective redwood stain. Available for 6' and 6-1/2' Softub models.

Partial assembly required. 90 day warranty.

A. Full Surround Deck with Step

Fun and functional! The perfect outdoor dining area. Encircles the spa with a convenient wrap-around "counter" and spacious entry step.
6' #S9022; 6-1/2' #S9030

B. Surround Step

This curved step encircles 2/8 of the spa for easy entry and exit.
6' #S9230; 6-1/2' #S9233

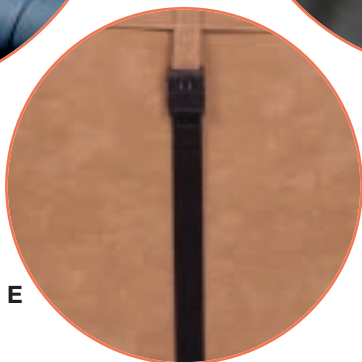
thermal efficiency



C



D



E

C. Thermal Spa Blanket #5235

Insulate your spa with this floating thermal blanket. Protects the underneath of the spa lid from condensation and prevents evaporation heat loss. 7'x7' size can be cut to fit any spa interior.

D. Kill-A-Watt #7515

Connect any 120v appliance to the Kill-A-Watt and it will monitor electric consumption by the kilowatt hour. Calculate the electrical expense to operate by the day, week, month or year! Also displays volts, watts, amps, and checks the quality of your power by monitoring voltage and line frequency.

E. Replacement Lid Strap & Locks

For use with the Thermal Hinged Cover. Combination locks avoid unauthorized access to the spa.

Model 140 #9044140

Model 220 #9044220

Model 300 #9044000

decking



B



D



C

SHOWN:
(1) Semi-Surround Deck
(1) Surround Step

C. Towel Tree #9220

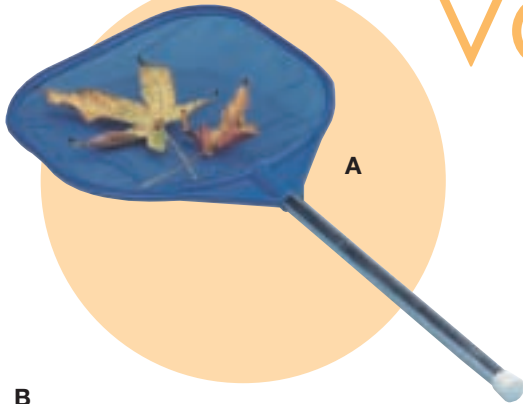
Place this towel tree anywhere to keep robes and towels handy.

D. Semi-Surround Deck

For the utmost in versatility, this popular surround encircles 3/8 of the spa to allow different options, a lid lift, or more access around the rest of the spa.

6' #S9200; 6-1/2' #S9201

vacs & skimmers



A

A. Hand Skimmer #6300
Easily retrieve leaves and other debris from the spa water.

B. Paradise Spa Vac #6250
The perfect vacuum to keep spa-side to remove grit and other debris that gathers in the bottom of the spa. Telescopic pole provides user flexibility for hard-to-reach areas. No batteries or water hook-ups needed. Uses air and water pressure to suction.



B

C. Paradise POWER Spa Vac #6258
Vacuum your spa with the touch of a button. Operates on AA batteries (not included). Telescopic pole extends to 6'feet. Includes a FREE detachable scrubbing brush. Removable filter with ultra-fine stainless steel screen filters the smallest of debris.



C

filling & draining

D. Swirl Away Plumbing Cleaner #1810
Use prior to draining the spa. Dissolves accumulated bath and body oils that build-up in plumbing lines and impair jet action. 16 oz.

E. Simple Siphon #6260
Start a siphon instantly with a simple shake. Includes a garden hose connector for extended length.

F. Faucet Adaptor #4800
Easily connects to any faucet to allow the attachment of a garden hose. Perfect to fill the spa with warm water.

G. Submersible Pump #6320
This unique pump was originally designed for pool covers but is ideal for spas. Attaches to a standard garden hose. Unique filter design of bottom avoids clogging from debris. 25' cord.



F



E



G



D

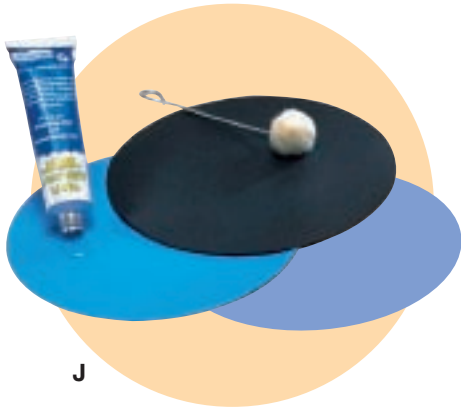
vinyl care



I



M



J



K



N



L



H

H. Softub Tubguard

Protect the Softub from dirt and UV exposure with our custom fitted Tubguard. The Tubguard is attractive, convenient, and can be removed in seconds. Fits over both the tub and power pak. Choose Softub 140 #5211; ST 220 #5221 or Softub 300 #5241

I. H₂O Cleaning Wand #6010

Connects to a garden hose to wash and scrub at the same time. No messy bucket or rags to deal with. .

J. Liner Repair Kit #9814000

Repairs cuts and tears in the Softub inner liner.

K. Bioclean #1798

Natural enzyme cleaner that rids your spa cover of stains and odors!

L. Softub Cleaner & Conditioner

#9801503 (2/pk 12 oz. each)

Protect your Softub investment and enjoy its beauty for years. This monthly cleaning and conditioning treatment keeps vinyl soft and supple and restores UV blockers for protection from the elements.

M. Vinyl Repair Kit #6400

Matches and repairs cuts or tears in the Softub exterior vinyl surface.

N. Duramitt #6875

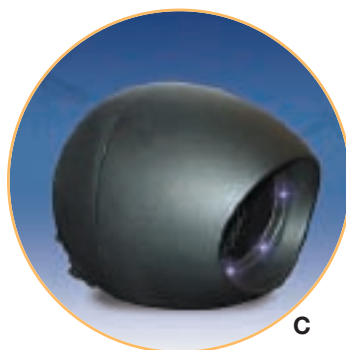
Gentle abrasive surface of glove is perfect for all cleaning jobs.

outdoor novelties

A



B



C



D

A. Sunny Solar Shower #6985

Start making hot water from the sun's energy. Unique handle mixes warmed water from the unique spiral solar base with water from the garden hose for the perfect temp! Use it anywhere you have access to a water hose and sun.

B. Jumbo Garden Thermometer #7525

Made of stainless and acrylic, this beautiful outdoor thermometer lights up at night due to an ingenious solar panel and super bright LED's. Almost 4' tall. Degrees displayed in Fahrenheit.

C. LED Bug Trap #7520

This ingenious little device attracts bugs with UV light, then a whisper-soft fan sucks them into a one way chamber. Free standing or wall-mount. Plugs into a standard outlet.

D. Wireless Remote Thermometer #7510

Monitor the temperature of up to 3 remote locations from one central unit. Know the temperature in the pool, spa or outdoors from comfortably inside the house.

Extra Remote Transmitter #7512

Temperature control allows you to mix cold water with the solar heated water for the perfect temperature.

Solar storage base allows you to have warmed water anywhere you have access to sun and water.

Authorized Softub Dealer:

For the location of the nearest Softub Essentials retailer, please call 626-305-1182.