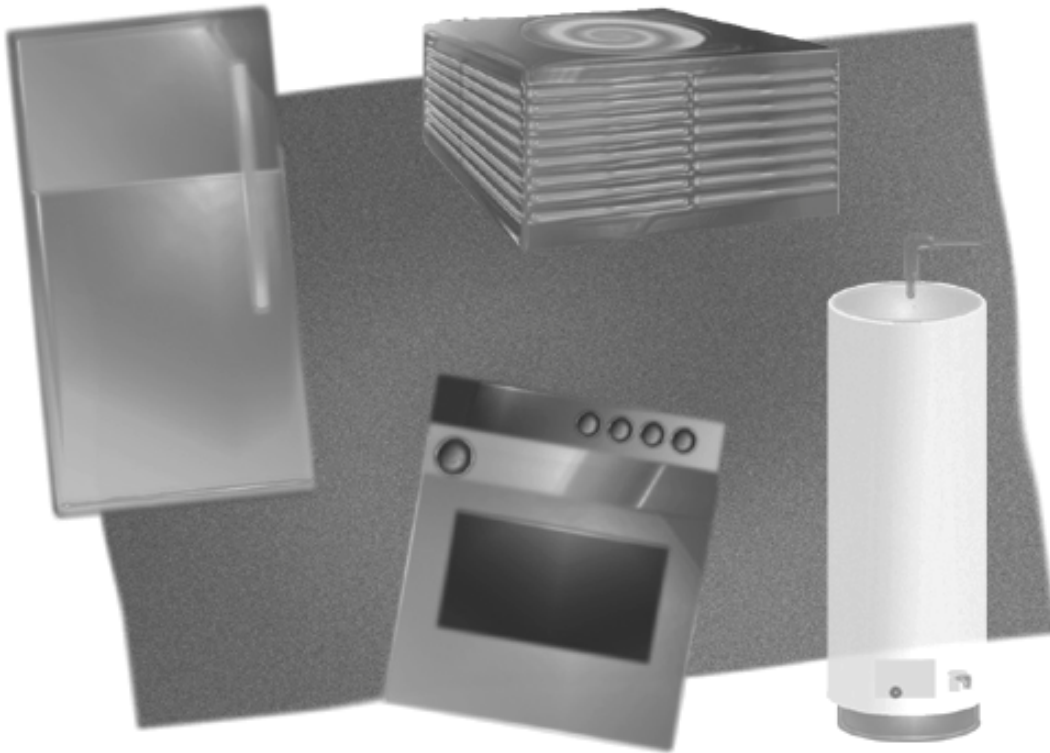


APPLIANCE

EFFICIENCY REGULATIONS

CALIFORNIA
ENERGY
COMMISSION



July 2006
CEC-400-2006-002-REV1



ARNOLD SCHWARZENEGGER, Governor

(g) **Pool Heaters, Residential Pool Pumps, and Portable Electric Spas.**

- (1) **Energy Design Standard for Natural Gas Pool Heaters.** Natural gas pool heaters shall not be equipped with constant burning pilots.
- (2) **Energy Design Standard for All Pool Heaters.** All pool heaters shall have a readily accessible on-off switch that is mounted on the outside of the heater and that allows shutting off the heater without adjusting the thermostat setting.
- (3) **Energy Efficiency Standard for Heat Pump Pool Heaters.** For heat pump pool heaters manufactured on or after March 1, 2003, the average of the coefficient of performance (COP) at Standard Temperature Rating and the coefficient of performance (COP) at Low Temperature Rating shall be not less than 3.5.
- (4) **Energy Efficiency Standards for Gas and Oil Pool Heaters.** See Section 1605.1(g) for energy efficiency standards for gas and oil pool heaters that are federally-regulated consumer products.
- (5) **Residential Pool Pumps.**
 - (A) **Motor Efficiency.** Pool pump motors manufactured on or after January 1, 2006 may not be split-phase or capacitor start – induction run type.
 - (B) **Two-Speed Capability.**
 - (i) **Pump Motors.** Pool pump motors with a capacity of 1 HP or more which are manufactured on or after January 1, 2008, shall have the capability of operating at two or more speeds with a low speed having a rotation rate that is no more than one-half of the motor's maximum rotation rate.
 - (ii) **Pump Controls.** Pool pump motor controls manufactured on or after January 1, 2008 shall have the capability of operating the pool pump at least two speeds. The default circulation speed shall be the lowest speed, with a high speed override capability being for a temporary period not to exceed one normal cycle.
- (6) **Portable Electric Spas.** The standby power of portable electric spas manufactured on or after January 1, 2006, shall be not greater than $5(V^{2/3})$ Watts where V = the total volume, in gallons.